

SR/CXM

Remote Display for SOLARA SR...CX charge controllers User manual (English)

Dear Customer,

Thank you very much for purchasing this SOLARA product. Please read the instructions carefully and thoroughly before using the product.

General Features

The SR/CXM remote display is designed for displaying Panel Current, Load Current and Battery Voltage, Ah, SOC, etc as true values for SOLARA SR...CX series charge controllers.

- Clear, readable 3-digit LC display and symbols
- 2 push buttons to select displayed value
- Allow retrieving data of last 7 days from the SR...CX datalogger
- Prepared for DIN rail and wall mounting
- 2 meters long connecting wire

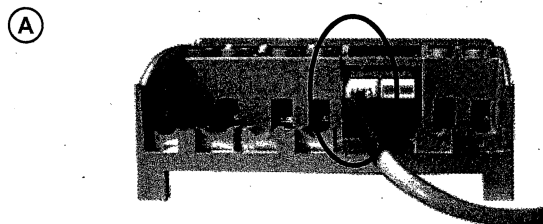
Mounting and Connecting

This product is intended for indoor use only. Protect it from direct sunlight and place it in a dry environment. Never install it in humid rooms (such as bathrooms).

REMARK: Connect this product by following the steps described below to avoid installation faults.

Connect SR/CXM remote display to SR...CX controller

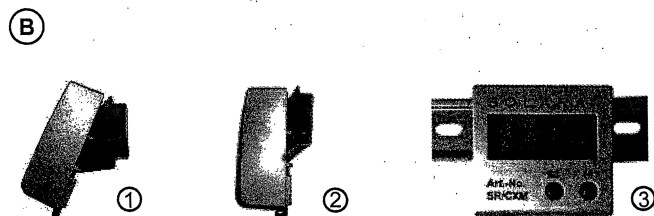
Please see Fig. (A) that shows how to connect the SR/CXM remote display to a SOLARA SR...CX controller.



Mounting the SR/CXM remote display

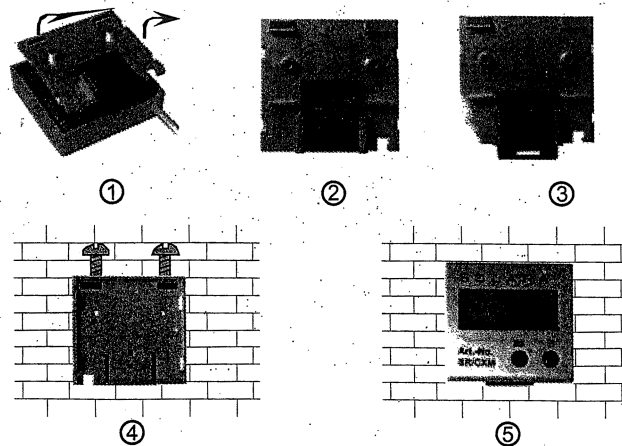
[DIN Rail Mounting]

Please see Fig. (B) that shows how to install the SR/CXM remote display on a standard 35mm DIN rail.



[Wall Mounting]

Please see Fig. (C) that shows how to install the SR/CXM remote display on the wall.



Display Function

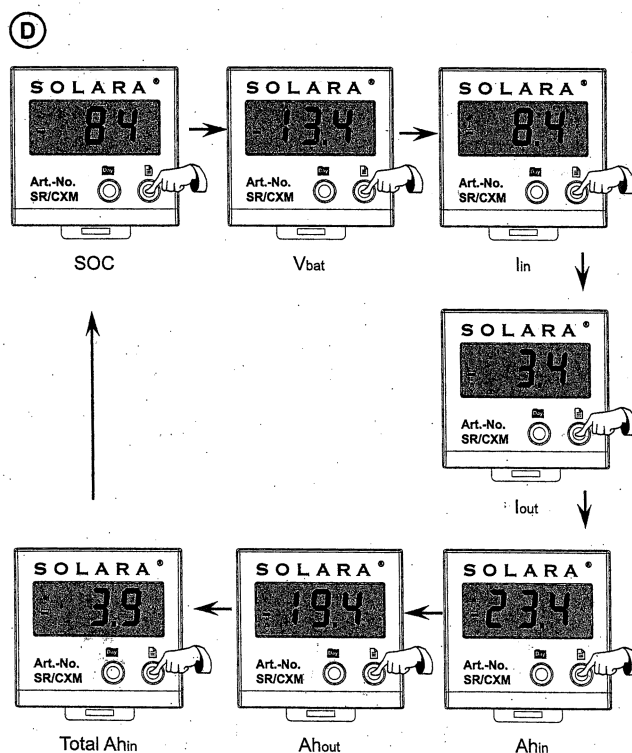
[Current Value]

Push the right button to toggle the parameters of your PV system today.

The parameters displayed in the LCD will toggle in this order :

SOC - **Vbat** (Battery Voltage) - **Iin** (Panel Current) - **Iout** (Load Current) - **Ahin** (Panel Amperehours) - **Ahout** (Load Amperehours) - **Total Ahin** (Total Panel Amperehours since PV system build up) - **SOC** - **Vbat** (Battery Voltage) - ...

Please see Fig. (D) for reference.



[History Data]

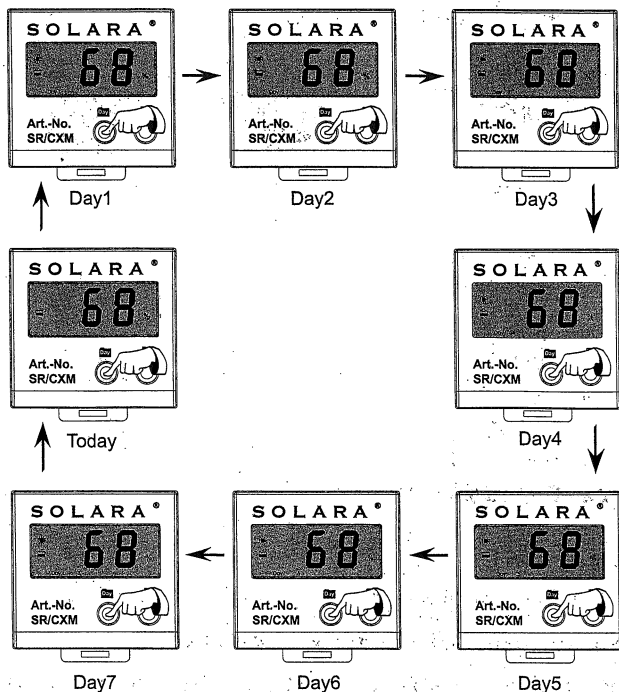
Step 1: First push the left button to toggle the day (Day 1 means yesterday).

The days displayed in the LCD will toggle in this order :

Day 1 - Day 2 - Day 3 - Day 4 - Day 5 - Day 6 - Day 7 - Today - Day 1 - Day 2 - ...

Please see Fig. (E) for reference.

E



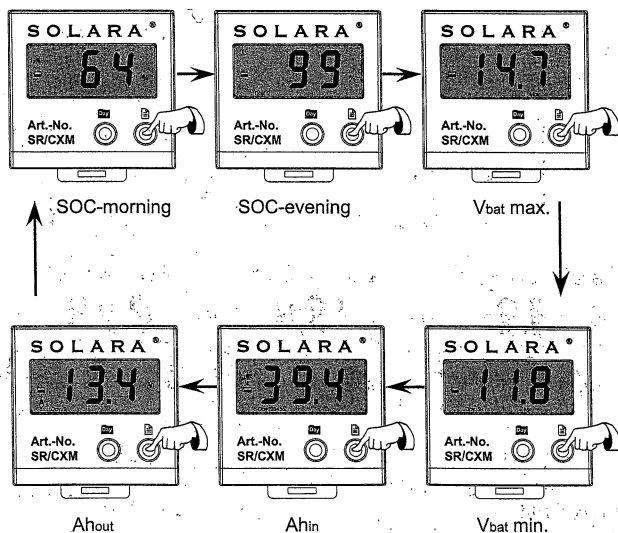
Step 2: Then push the right button to toggle the parameters of the day.

The parameters displayed in the LCD will toggle in this order :

SOC morning (State of Charge in the morning) - **SOC** evening (State of Charge in the evening) - **V_{bat} max** (Maximum Battery Voltage) - **V_{bat} min** (Minimum Battery Voltage) - **Ah_{in}** (Panel Amperehours) - **Ah_{out}** (Load Amperehours) - **SOC** morning (State of Charge in the morning) - **SOC** evening (State of Charge in the evening) - ...

Please see Fig. F for reference.

F



Power Saving Mode

If no operation are carried out to SR/CXM for more than 15 minute, the SR/CXM will switch to Power Saving Mode automatically with nothing displayed on LCD.

Please press left button once to wake up the SR/CXM for normal operation.

General Safety and Usage Recommendation

- Batteries store a large amount of energy. Never short circuit a battery under any circumstances. We recommend connecting a fuse (slow acting type) directly to the battery.
- Batteries can produce flammable gases. Avoid making sparks, using fire or any naked flame under any circumstances. Make sure that the battery room is ventilated.
- Avoid touching or short circuiting wires or terminals. Be aware that the voltages on specific terminals or wires can be up to double the battery voltage. Use isolated tools, stand on dry ground and keep your hands dry.
- Keep children away from batteries and the charge controller.
- Please observe the safety recommendations of the battery manufacturer. If in doubt, consult your dealer or installer.

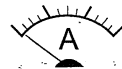
Liability Exclusion

The manufacturer shall not be liable for damages, especially on the battery, caused by use other than as intended or as mentioned in this manual or if the recommendations of the battery manufacturer are neglected. The manufacturer shall not be liable if there has been service or repair carried out by any unauthorized person.

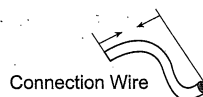
Technical Data



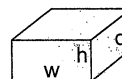
Display voltage range of your SR...CX



Display current range of your SR...CX



2m



w70 x h67 x d29mm



94g (with connecting wire)



-25 to +50 °C



IP22

Subject to change without notice. Version: 20090122

Made in one of the following countries:

Germany - China - Bolivia - India

SOLARA - Hamburg

www.solara.de

CID: 181805211

ISO9001:2000

CE RoHS